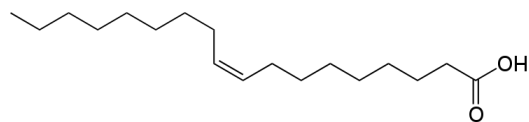
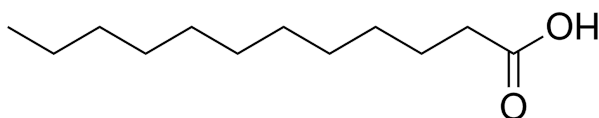


= **TRIGLICERIDE**

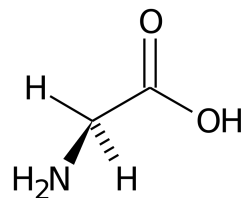
Questo NO ma se i 3 acidi grassi sono differenti
Il carbonio 2 è un centro chirale



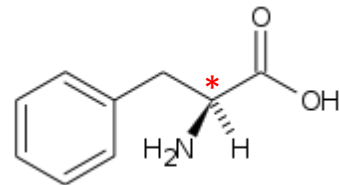
Acido oleico NO



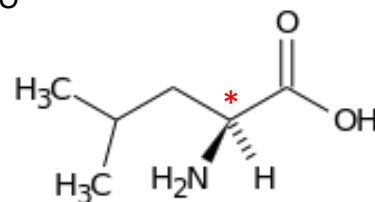
Acido laurico NO



Glicina
NO

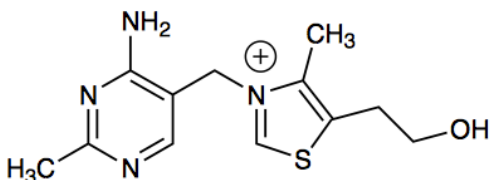


Fenilalanina
Sì



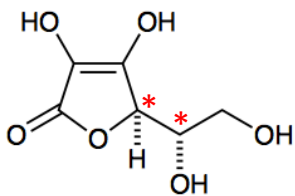
Leucina

Sì



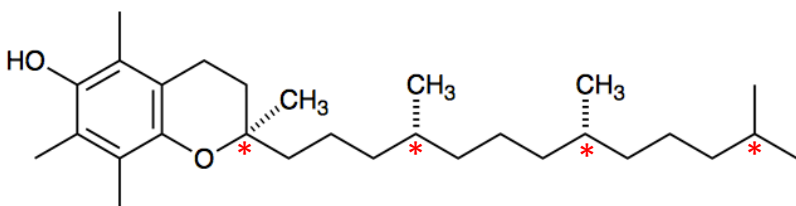
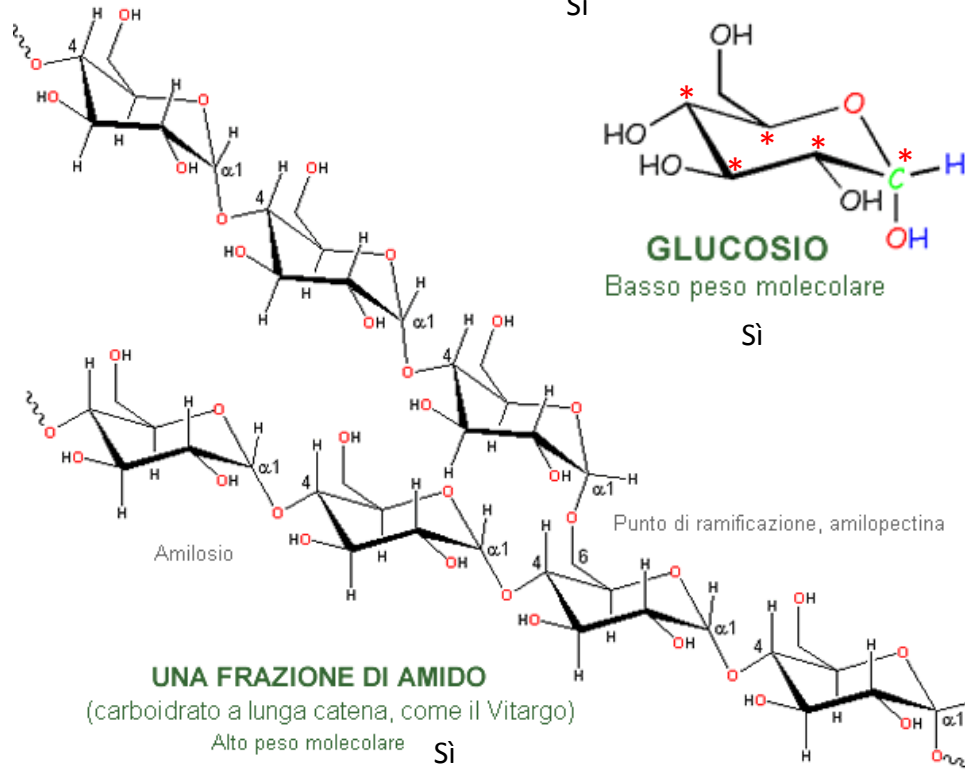
thiamine (vitamin B₁)

NO

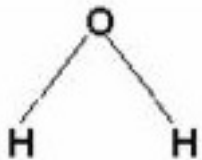


ascorbic acid (vitamin C)

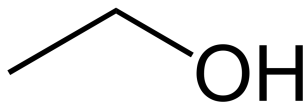
Sì



d- α -tocopherol (vitamin E) Sì

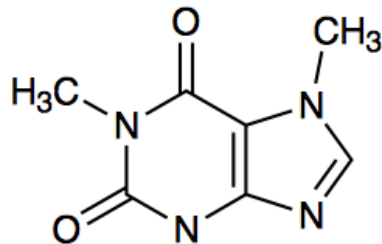


NO



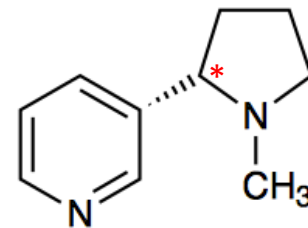
Alcol etilico

NO



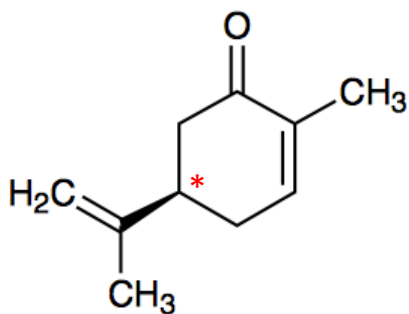
caffeine

NO



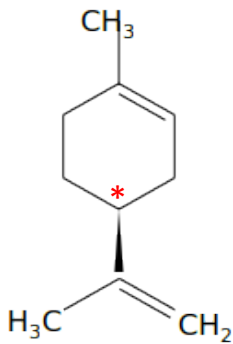
nicotine

Si



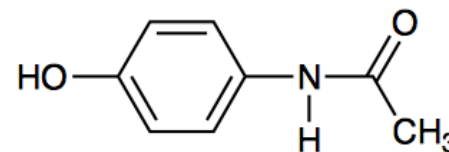
l-carvone

Si



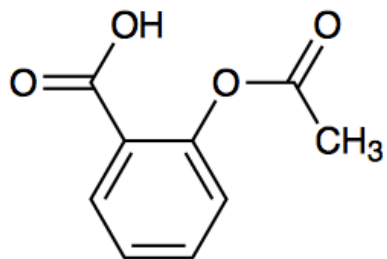
S-(-)-limonene

Si



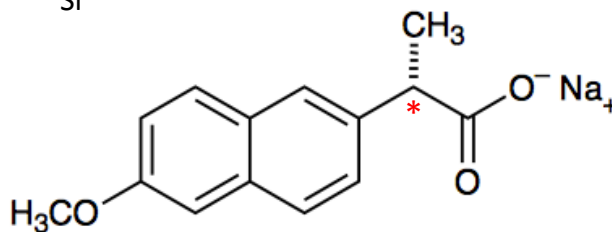
acetaminophen

NO



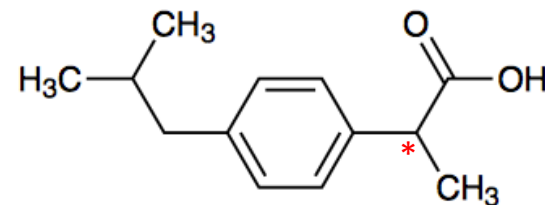
acetylsalicylic acid

NO



naproxen sodium salt

Si

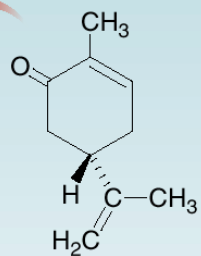


ibuprofen

Si



caraway seeds

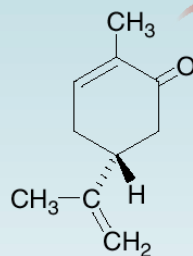


(S)-carvone

(S)-Carvone has the odor of caraway.

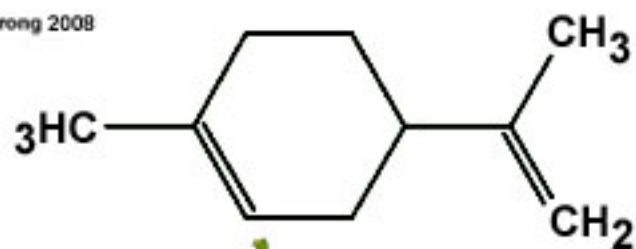
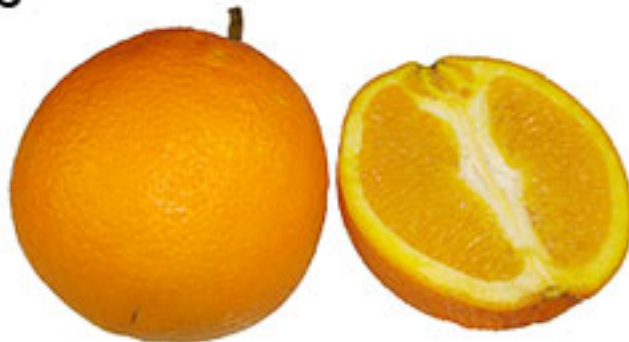
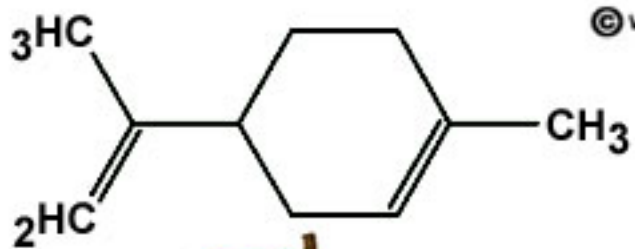


spearmint leaves



(R)-carvone

(R)-Carvone has the odor of spearmint.



© W.P. Armstrong 2008