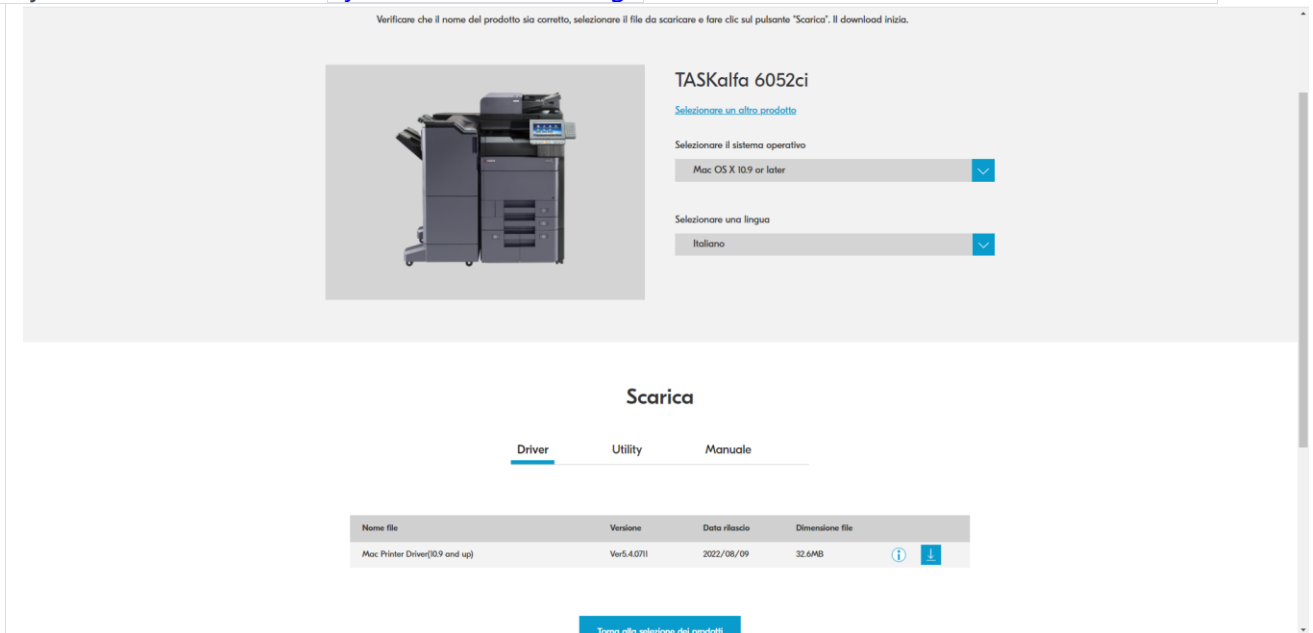


Instructions for Installing MAC Print Queues

- 1) To add the two Kyocera print queues:
- 2) Download the Kyocera drivers (if not already present on your Mac): Refer to the driver Kyocera Taskalfa 6052ci [Kyocera Download Page](#) Download the Mac Printer driver as well.



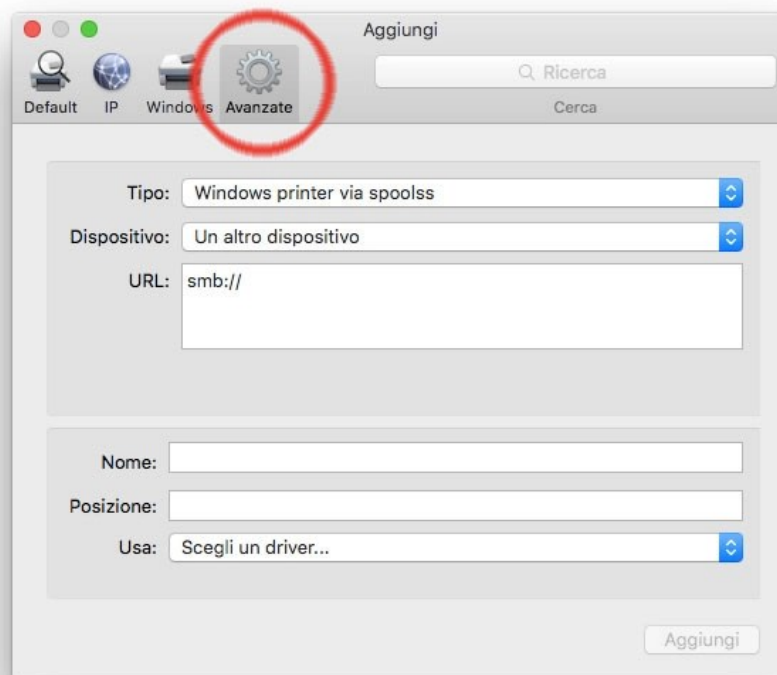
- 3) Firstly, install the downloaded Mac drivers from the Downloads folder (extract .dmg files → install .pkg files).
- 4) Open "System Preferences" (gear icon):



- 5) Select "Printers & Scanners":



- 6) Click the "+" button to add a new printer and choose "Advanced" (if not present, add it this way: hover cursor beside the three icons and click CTRL/Control + Click → "Customize Toolbar"):



- 7) After clicking "Advanced," enter the settings data from the following two tables.

- 8) Install the Black and White queue:

- Queue Name: Borgo Roma Black and White
- Type: Windows printer via spools
- URL: smb://157.27.6.33/UNIPRINT_BN?encryption=no

- d. Name: Univr-BN-BRoma (Choose your preferred name)
- e. Driver: Kyocera Taskalfa 6002i

In "Use," select the driver ("Select software") from the table above.

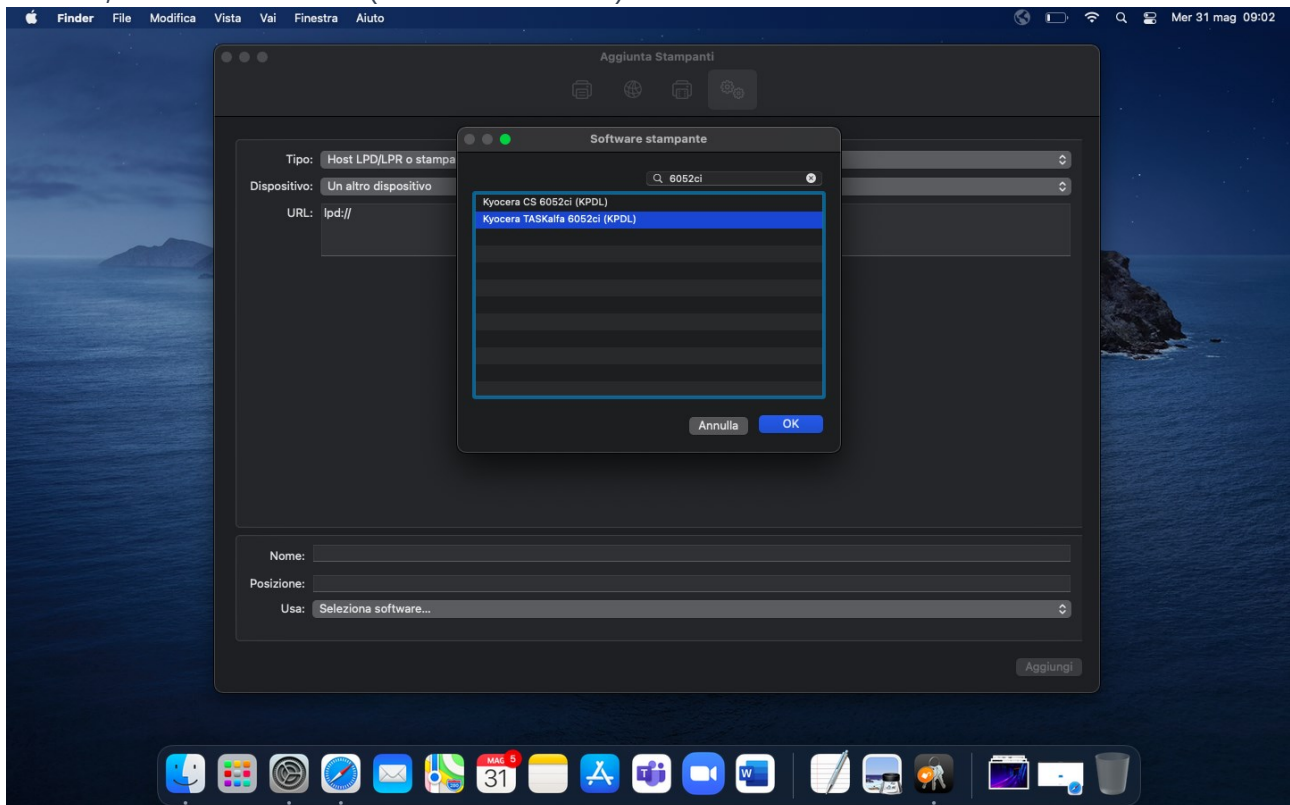
Select the following "Options":

- f. Tray 3,4.
- g. Document Finisher: 4000 pages.
- h. Punch unit enabled.

9) Install the Color queue:

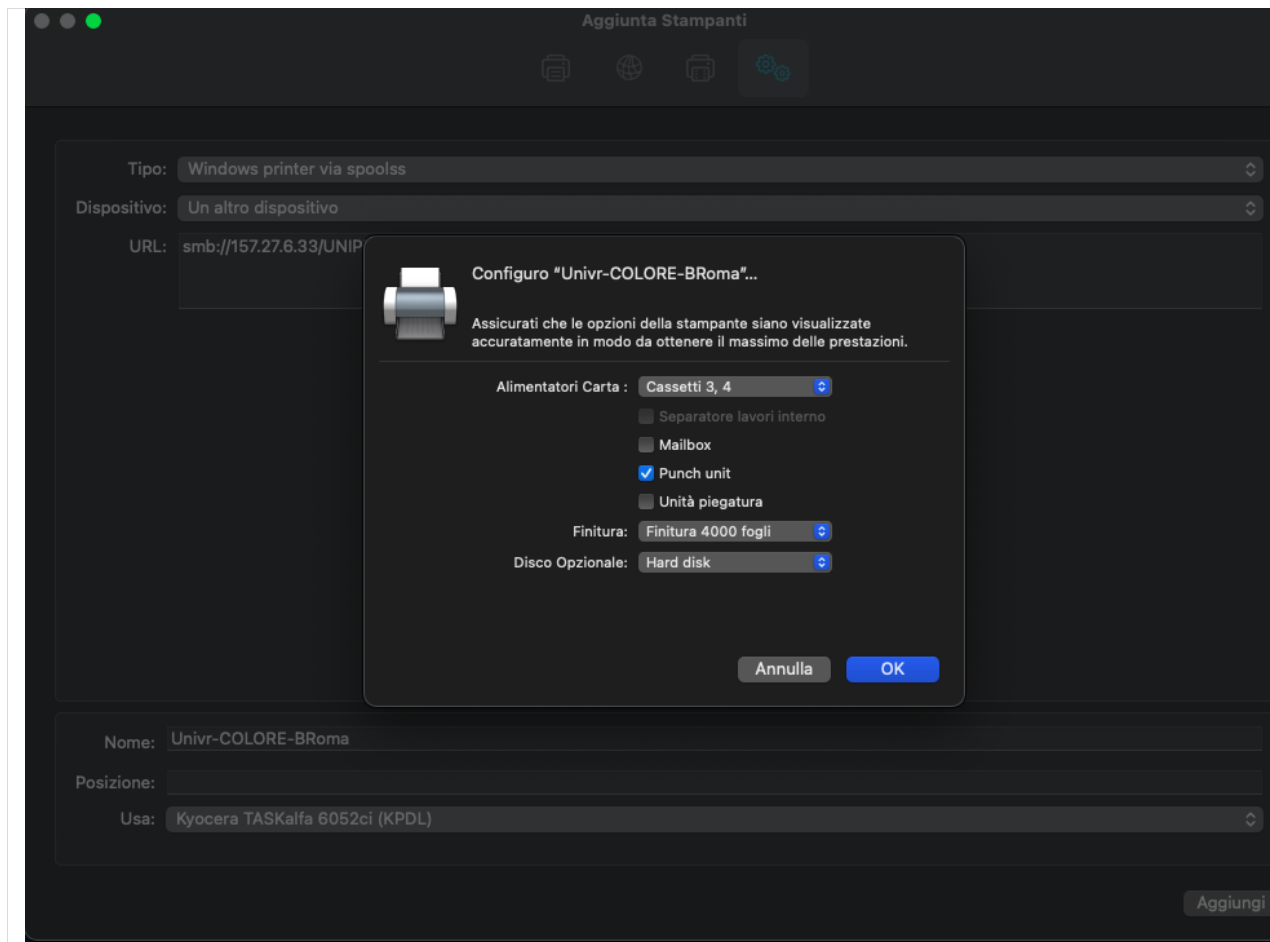
- a. Queue Name: Borgo Roma Color
- b. Type: Windows printer via spools
- c. URL: smb://157.27.6.33/UNIPRINT_COLORE?encryption=no
- d. Name: Univr-COLORE-BRoma
- e. Driver: Kyocera Taskalfa 6052ci

In "Use," select the driver ("Select software") from the table above.



Select the following "Options":

- f. Tray 3,4.
- g. Document Finisher: 4000 pages.
- h. Punch unit enabled.



10) Test print. For the first print, macOS will request GIA authentication. Enter the following:

- User: ATENEO\UsernameGIA
- Password: GIA Password.
- Save the credentials.

If incorrect credentials have been entered, you can remove the job from the queue. Open Keychain on your Mac, delete the entry with the address 157.27.6.33 in the "login" section, and try printing again.

You should be able to retrieve your print job at any Kyocera black printer within Ca'vignal.