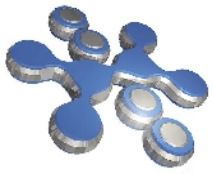




Master Universitario di I livello in
Progettazione e gestione di sistemi di rete

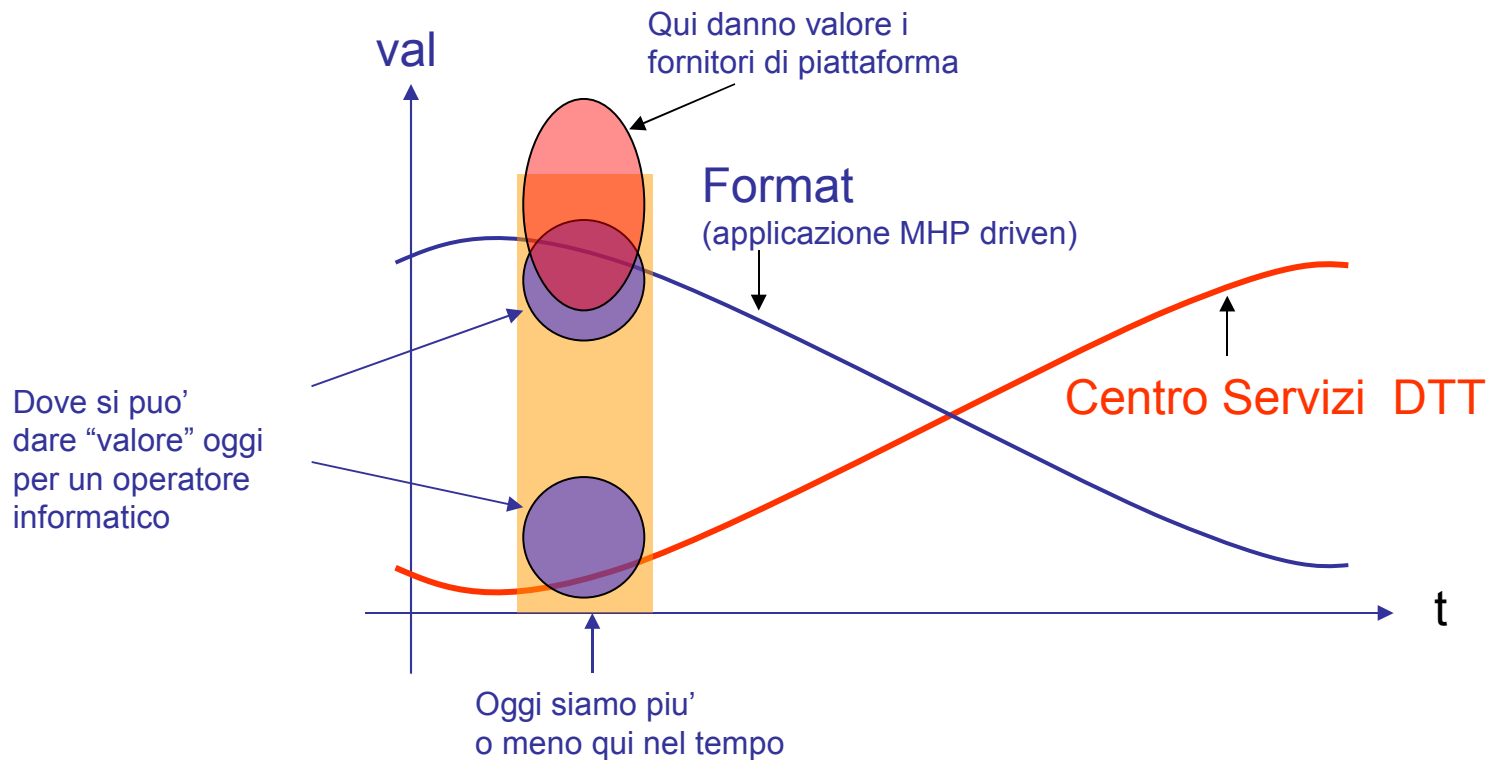
Digital Terrestrial Television

**Approcci alla realizzazione delle
applicazioni interattive e del sistema
interattivo televisivo**



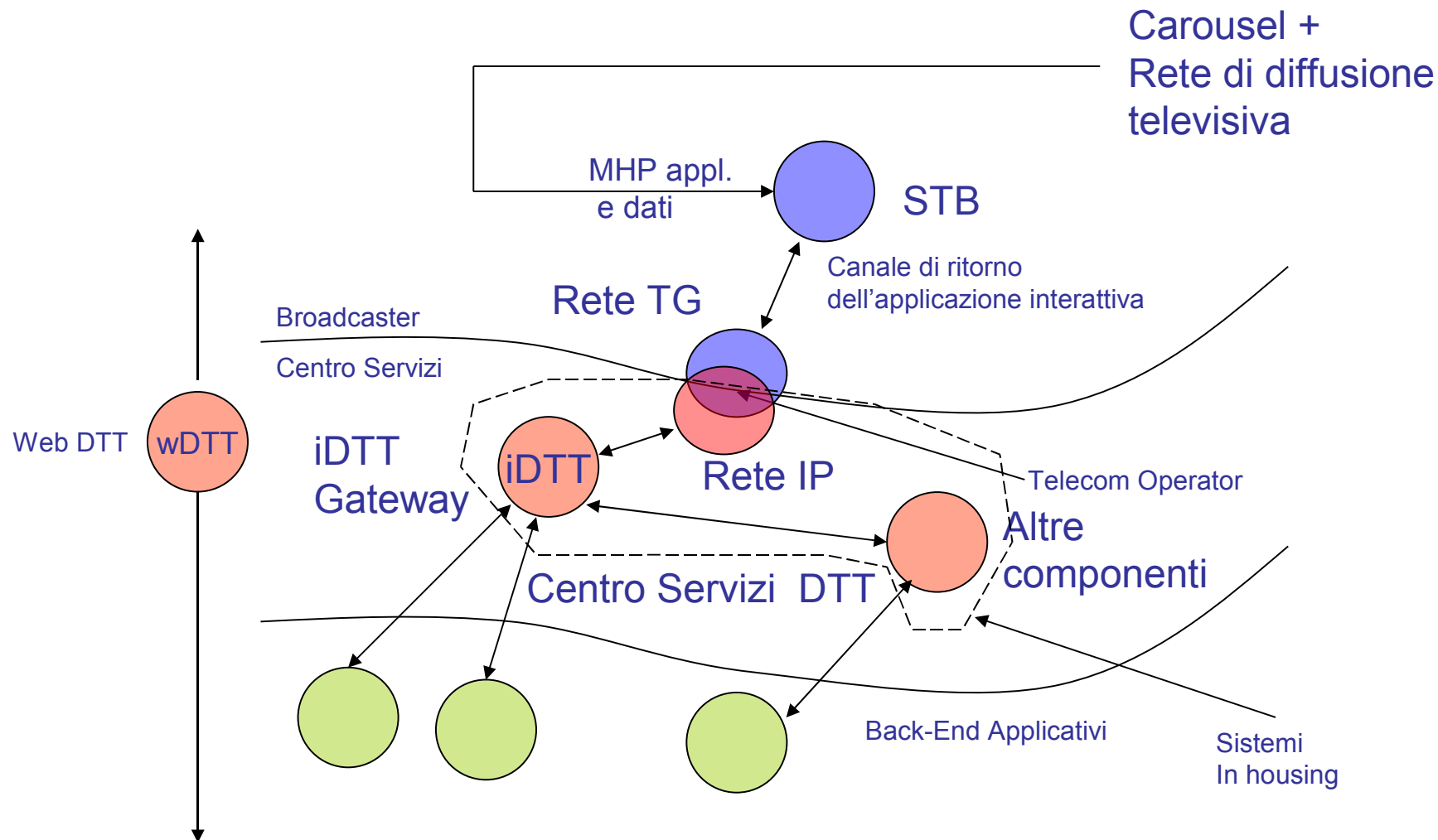
I valori in campo

Valori percepiti delle componenti DTT nel tempo :
ovvero capacita' di indirizzare revenues sul DTT.



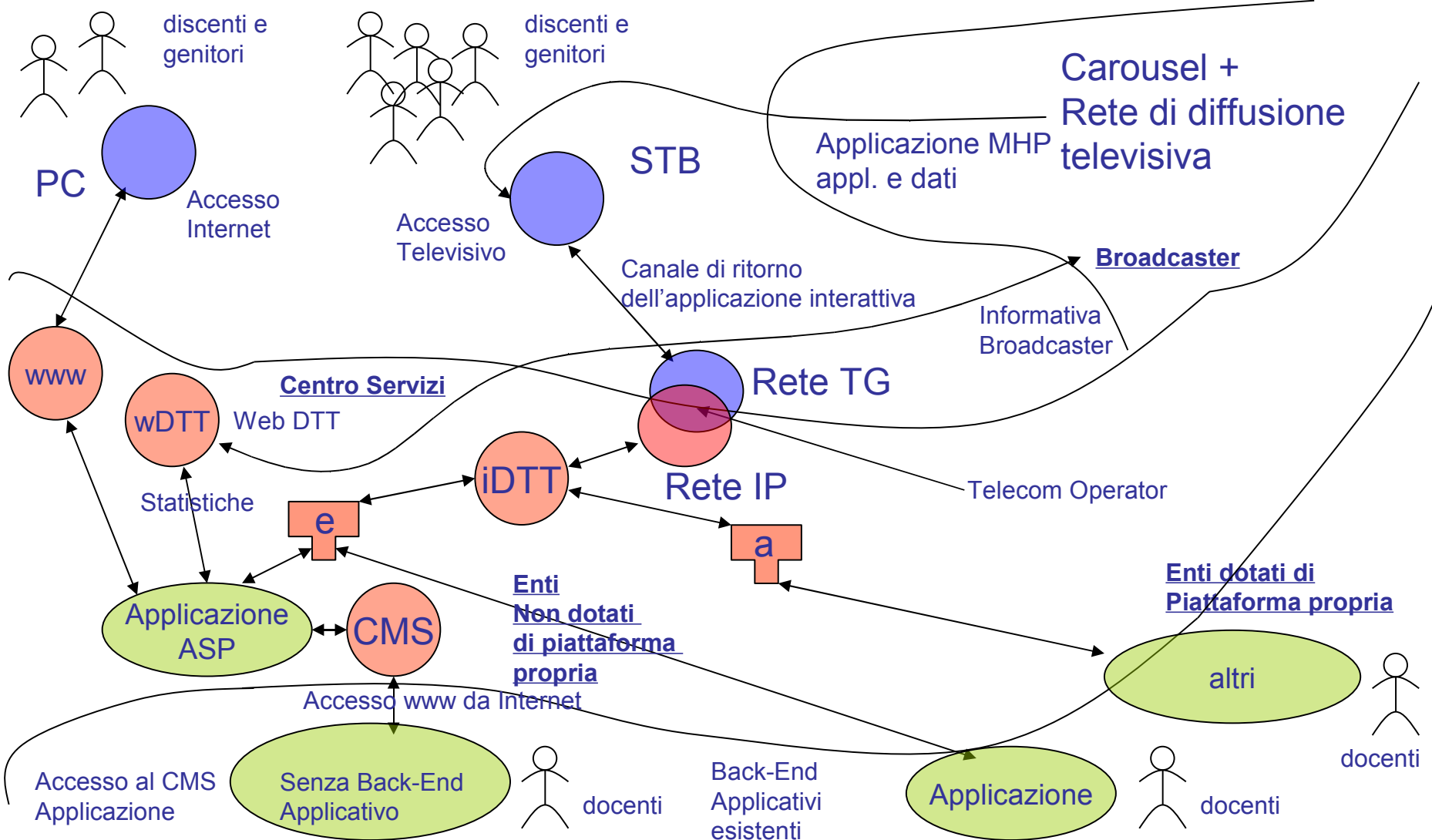


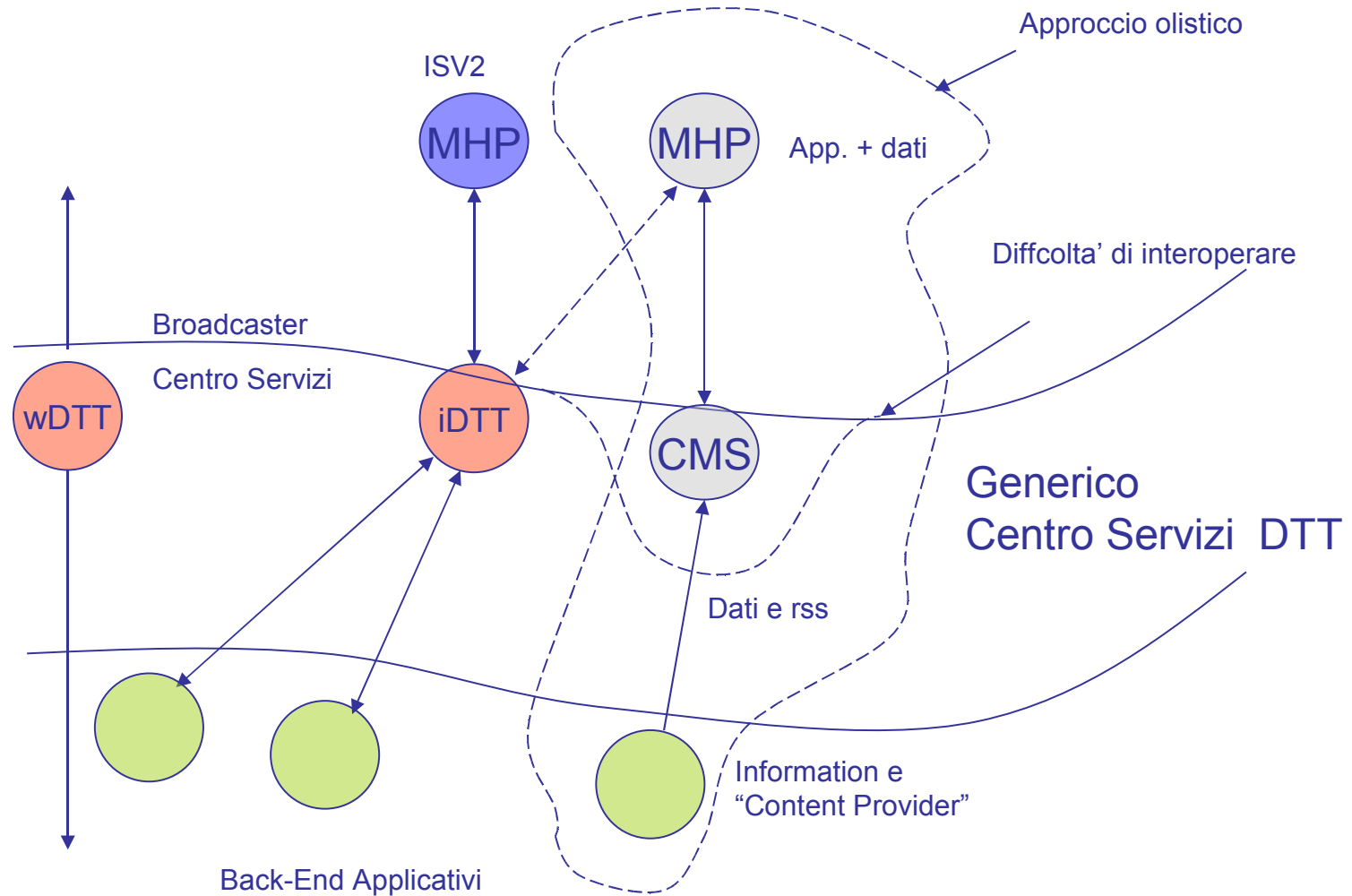
Il modello di centro servizi DTT





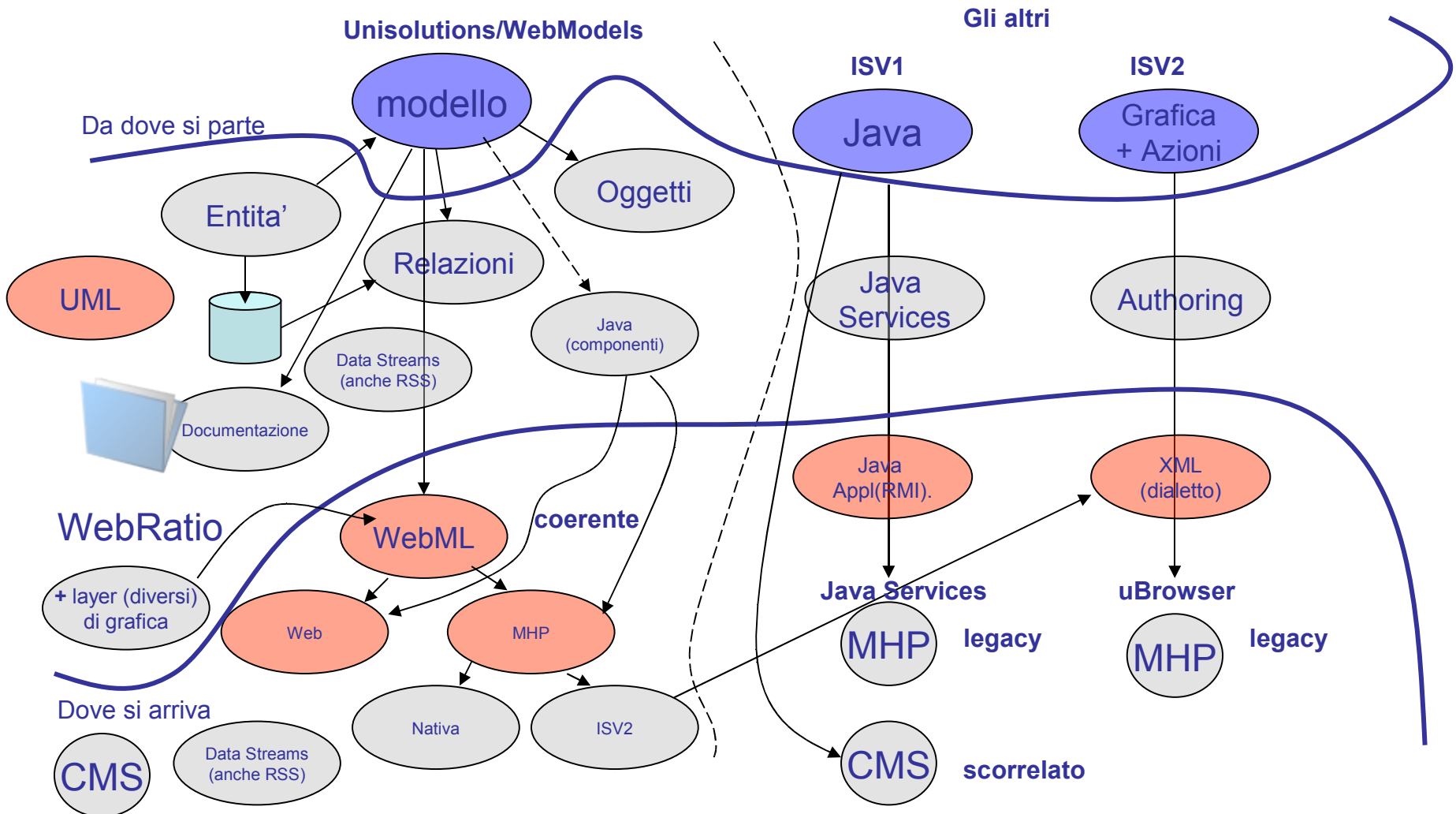
Architettura di un format applicativo interattivo

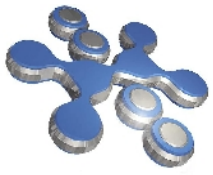




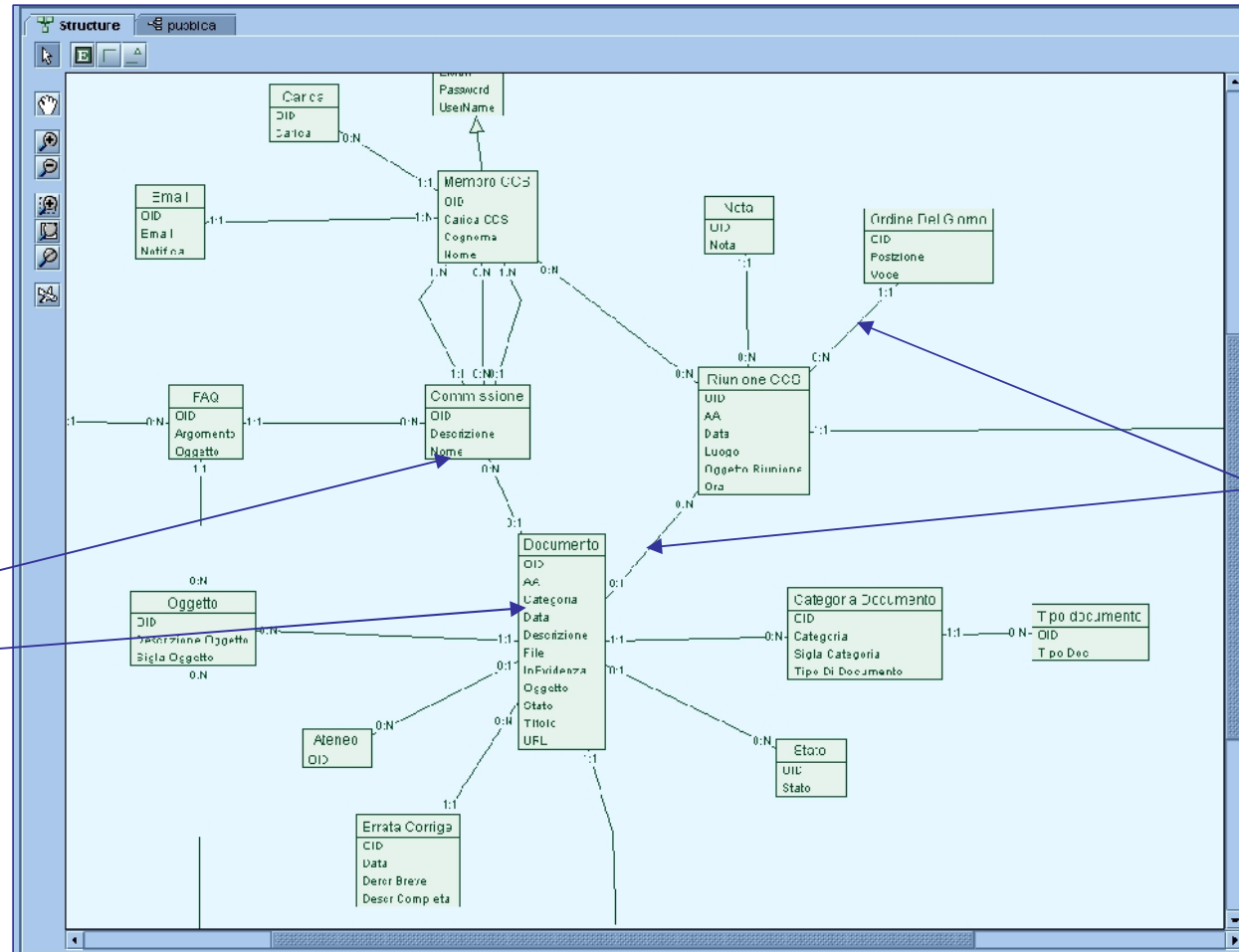


WebRatio MHP Edition



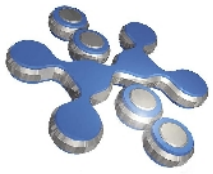


Modellazione e strutture E-R

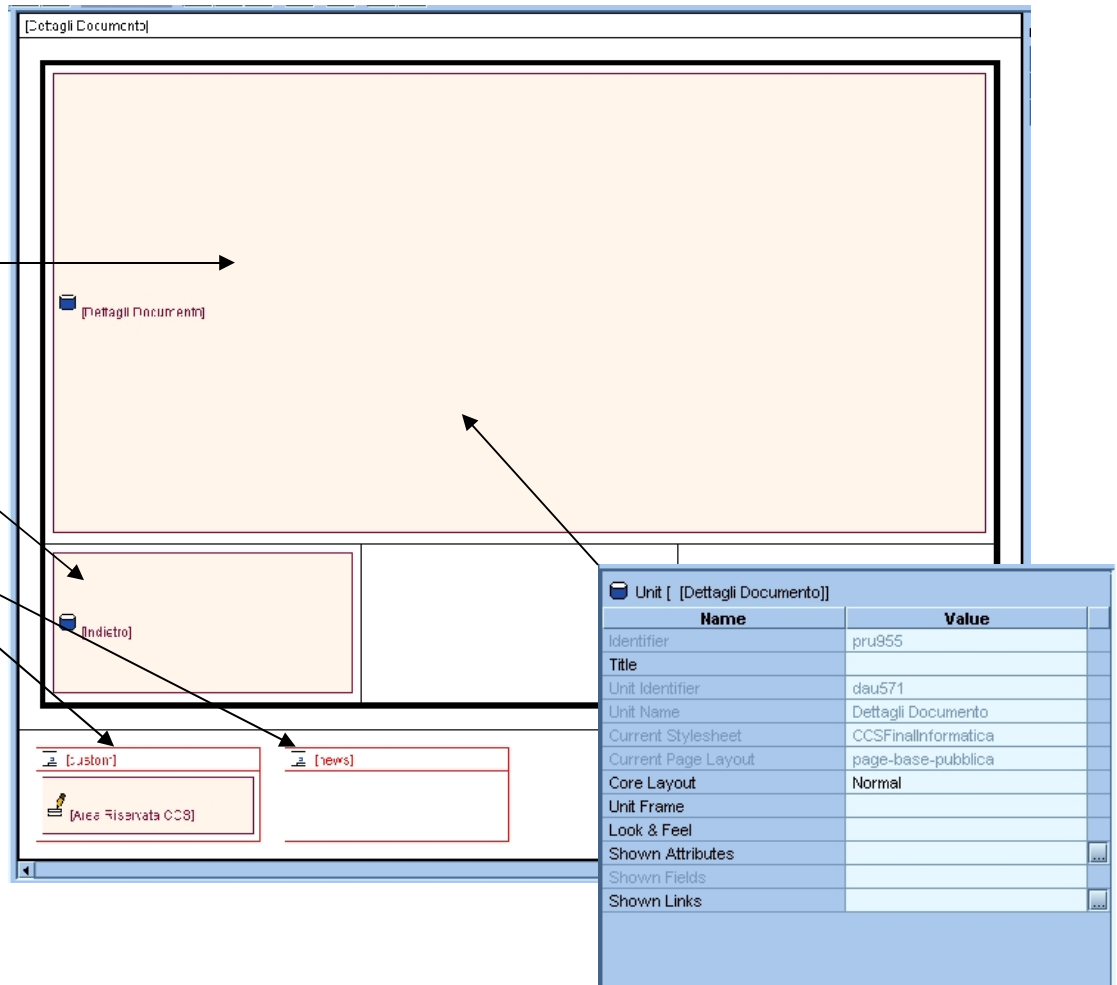
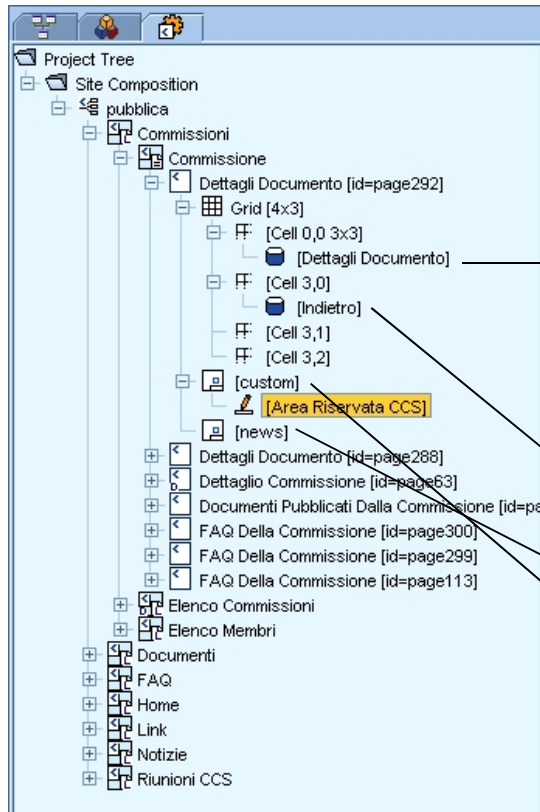


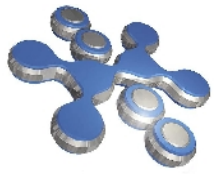
Entita'

Relazioni



Page Layers





Site views (web e DTT)

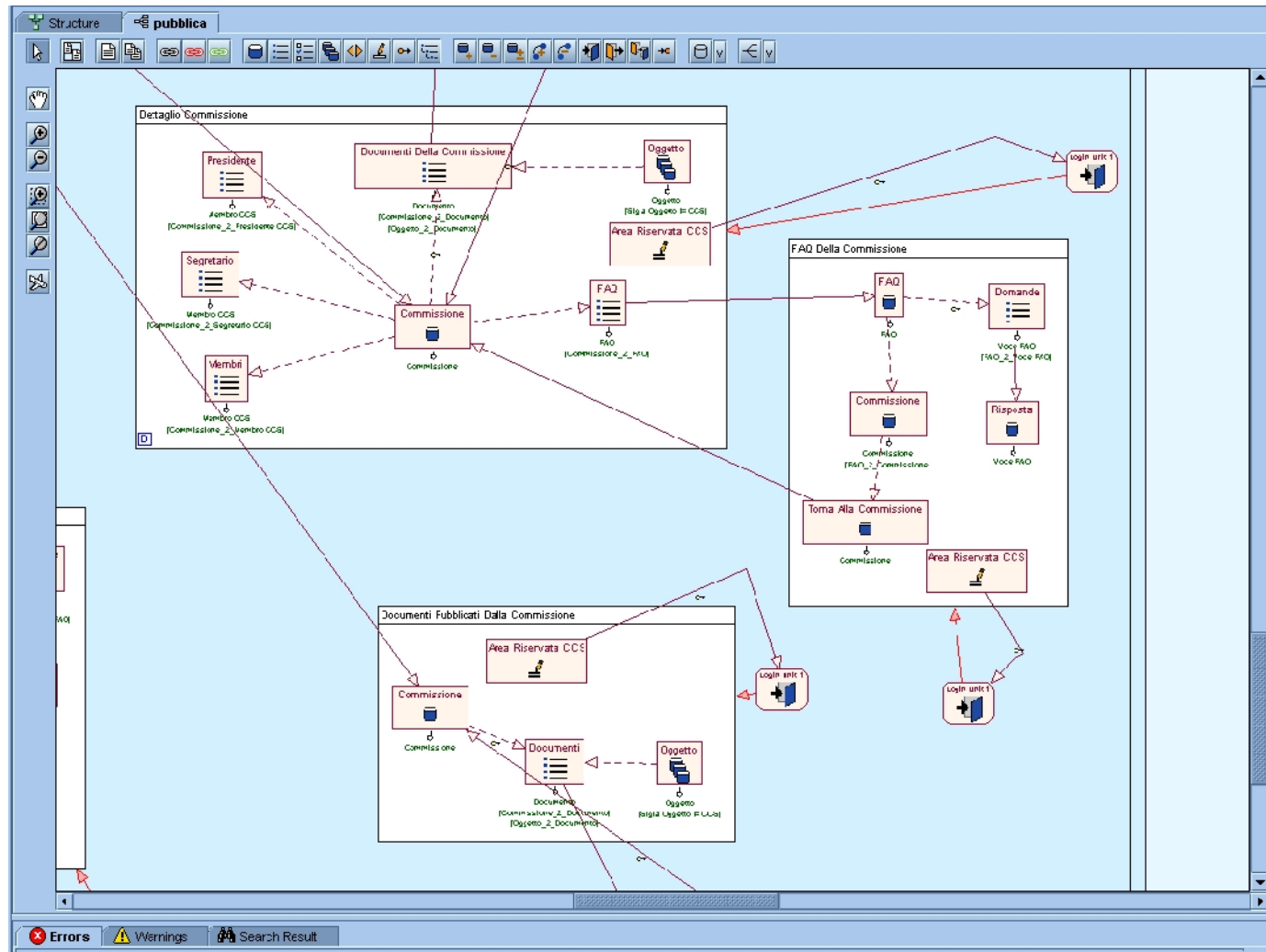


modello

Entita'

Relazioni

UNIT
(oggetti)





Data sources



Access → ODBC → MySQL ... → POSTGRES

The screenshot shows the ODBC Data Source Administrator window. In the left pane, the 'Data Sources' folder is expanded, showing a user-defined data source named 'ccs'. The right pane displays the configuration details for this data source.

Name	Value
Identifier	db4
Name	ccs
JDBC Driver	PostgreSQL
Sample JDBC URL	jdbc:postgresql://host:port/database
JDBC URL	jdbc:postgresql://localhost:5432/ccs
Username	postgres
Password	*****
Runtime DB Driver	
Sample Runtime URL	
Runtime DB URL	
Connection Count	5

An 'Errors' tab is visible at the bottom right of the window.



Entities



Diagram illustrating the structure of entities and their relationships in a system, showing a tree view on the left and a detailed view of the 'Documenti Della Commissione' entity on the right.

Tree View Structure:

- Dettagli Documento
 - Dettagli Documento
 - Link 2542
 - Indietro
 - Selector
 - Indietro
 - Area Riservata CCS
 - Password
 - Username
 - Entra
- Dettaglio Commissione
 - Documenti Della Commissione**
 - Selector
 - Commissione2Documenti
 - Documento2Oggetti
 - Dettagli
 - FAQ
 - Selector
 - Dettagli
 - Membri
 - Presidente
 - Segretario
 - Commissione
 - Link 1848
 - Link 255
 - Link 257
 - Link 2725
 - Oggetto
 - Selector
 - Link 2724
 - Area Riservata CCS
 - Password
 - Username

Index Unit [Documenti Della Commissione]

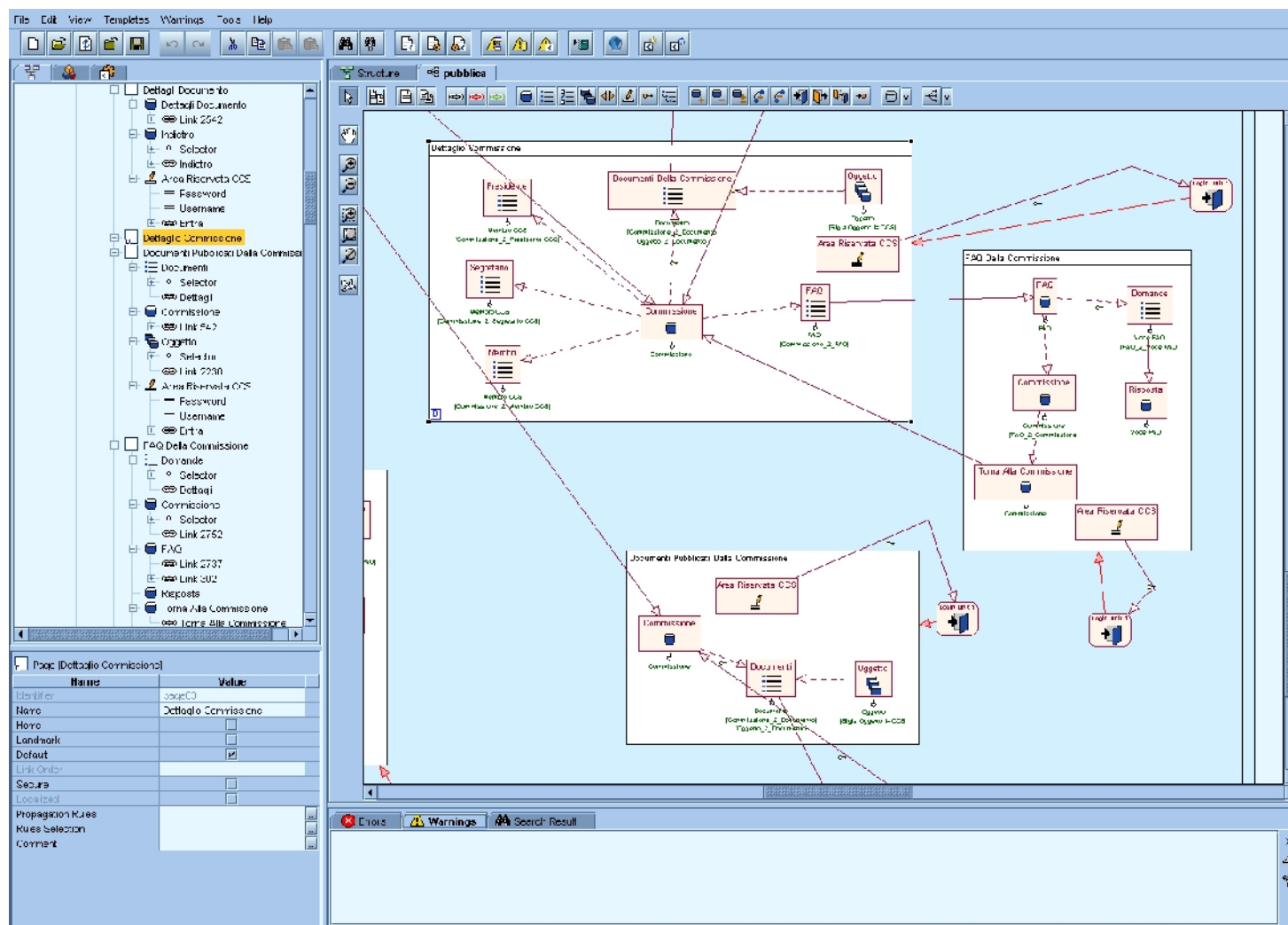
Name	Value
Identifier	inu123
Name	Documenti Della Commissione
Entity	Documento
Shown Attributes	Data Titolo File
Sort Attributes	Data
Distinct	<input type="checkbox"/>
Link Order	Dettagli
Comment	

Select an entity dialog box:

- Documenti
- Email
- Errata Corrigere
- FAQ
- Group
- Link
- Membro CCS
- Nota
- Notizia
- Oggetto
- Ordine Del Giorno
- Riunione CCS
- SiteView
- Stato
- Text Chunk



Il tool WebRatio MHP Edition





Documentazione (pdf o html)



Adobe Reader - [Documentazione.pdf]

File Modifica Vista Documento Strumenti Finestra ?

Apri Salva una copia Stampa Invia per posta elettronica Ricerca Seleziona testo 136%

Opzioni x

Struttura

- Overview
- Structure
 - HighImage
 - Category
 - Combination
 - Group
 - Product
 - SiteView
 - Store
 - Text Record
 - User
- Navigation
 - Acme Web
 - Home Page (Home Page)
 - Others
 - Combination Page
 - Search combinations
 - Products
 - By category
 - By price
 - Images Page
 - Product Page
 - Product search
 - Stores
 - Acme Administrator
 - Statistic

Page

☐ By category

+ [Acme Web](#)
+ [Products](#)
+ ☐ By category

Landmark in site-view: [Acme Web](#)

Default page of area: [Products](#)

Hierarchical Index Unit Summary

Categories	
----------------------------	--

Hierarchical Index Unit

[Categories](#)

+ [Acme Web](#)
+ [Products](#)
+ ☐ By category
+ [Categories](#)

Entity: [Category](#)

Display Attribute Summary

Category

Sort Attribute Summary

Category (asc)

Hierarchical Index Level Summary

Products

Outgoing Link Summary

	to Product details	Details (normal)
--	------------------------------------	----------------------------------

Hierarchical Index Level 'Products'

Entity: [Product](#)

Relationship: [Category 2 Product](#)

Display Attributes: [code](#), [name](#)

Sort Attributes: [name](#)

Link

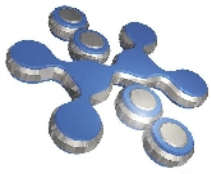
[Details](#)

Type: normal

Source: [Categories](#)

209,5 x 297 mm

52 di 72



WebML



```
<DOMAIN id="SupportType" value="CD Tape Vinyl"/>

<ENTITY id="Album">
  <ATTRIBUTE id="title" type="String"/>
  <ATTRIBUTE id="cover" type="Image"/>
  <ATTRIBUTE id="year" type="Integer"/>
  <COMPONENT id="Support" minCard="1" maxCard="N">
    <ATTRIBUTE id="type" userType="SupportType"/>
    <ATTRIBUTE id="listPrice" type="Float"/>
    <ATTRIBUTE id="discountPercentage" type="Integer"/>
    <ATTRIBUTE id="currentPrice" type="Float"
      value="Self.listPrice *
        (1 - (Self.discountPercentage / 100))"/>
  </COMPONENT>
  <RELATIONSHIP id="Album2Artist" to="Artist" inverse="Artist2Album"
    minCard="1" maxCard="1"/>
  <RELATIONSHIP id="Album2Track" to="Track" inverse="Track2Album"
    minCard="1" maxCard="N"/>
</ENTITY>

<ENTITY id="Artist">
  <ATTRIBUTE id="firstName" type="String"/>
  <ATTRIBUTE id="lastName" type="String"/>
  <ATTRIBUTE id="birthDate" type="Date"/>
  <ATTRIBUTE id="birthPlace" type="String"/>
  <ATTRIBUTE id="photo" type="Image"/>
  <ATTRIBUTE id="biographicInfo" type="Text"/>
  <RELATIONSHIP id="Artist2Album" to="Album" inverse="Album2Artist"
    minCard="1" maxCard="N"/>
  <RELATIONSHIP id="Artist2Review" to="Review" inverse="Review2Artist"
    minCard="0" maxCard="N"/>
</ENTITY>

<ENTITY id="Track">
  <ATTRIBUTE id="number" type="Integer"/>
  <ATTRIBUTE id="title" type="String"/>
  <ATTRIBUTE id="mp3" type="URL"/>
  <ATTRIBUTE id="hqMpeg" type="URL"/>
  <RELATIONSHIP id="Track2Album" to="Album" inverse="Album2Track"
    minCard="1" maxCard="1"/>
</ENTITY>

<ENTITY id="Review">
  <ATTRIBUTE id="text" type="Text"/>
  <ATTRIBUTE id="author" type="String"/>
  <RELATIONSHIP id="Review2Artist" to="Artist" inverse="Artist2Review"
    minCard="1" maxCard="1"/>
</ENTITY>
```

<http://www9.org/w9cdrom/177/177.html>

<http://www.webml.org/webml/page1.do>

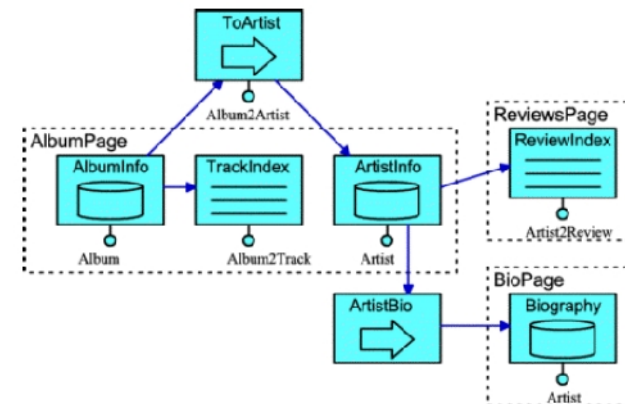


Figure 2: Example of hypertext built with WebML composition and navigation primitives.

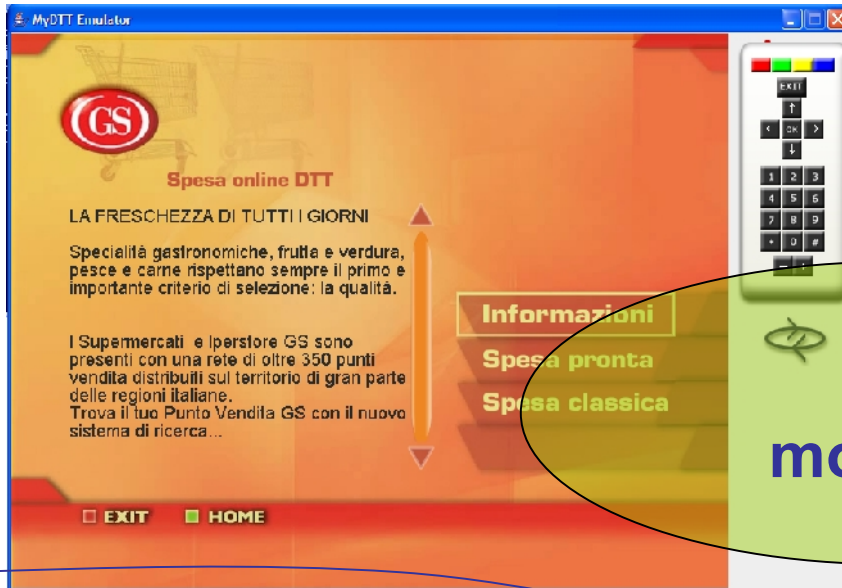


Risultato Finale Coerente



DTT

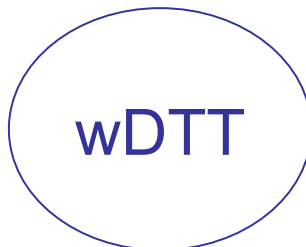
WWW



Centro Servizi DTT



Data
Stream



wDTT



iDTT



DB



APPL
SERVER