



*Department of Computer Science*

# Clinical Information Systems







# The group



**Carlo Combi**  
Full Professor



**Alberto Belussi**  
Associate Professor



**Damiano Carra**  
Assistant Professor



**Barbara Oliboni**  
Assistant Professor



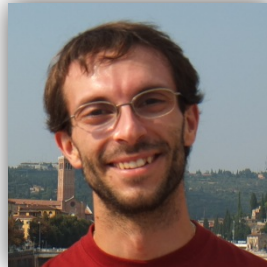
**Roberto Posenato**  
Assistant Professor



**Pietro Sala**  
Post-Doc



**Margherita Zorzi**  
Post-Doc



**Gabriele Pozzani**  
Post-Doc



**Sara Migliorini**  
Post-Doc



**Alberto Sabaini**  
Post-Doc



**Francesca Zerbato**  
Ph.D. Student

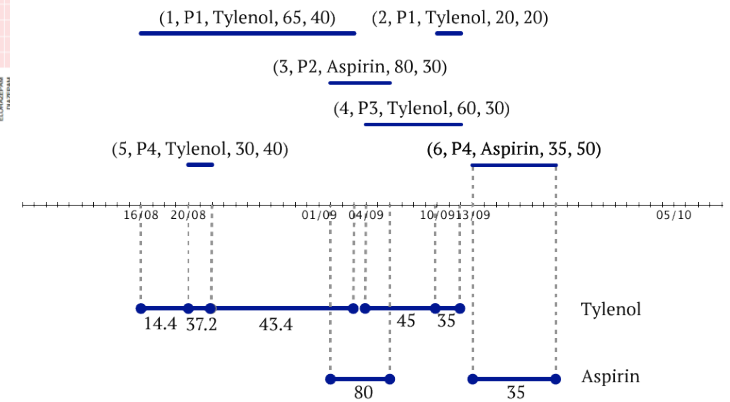
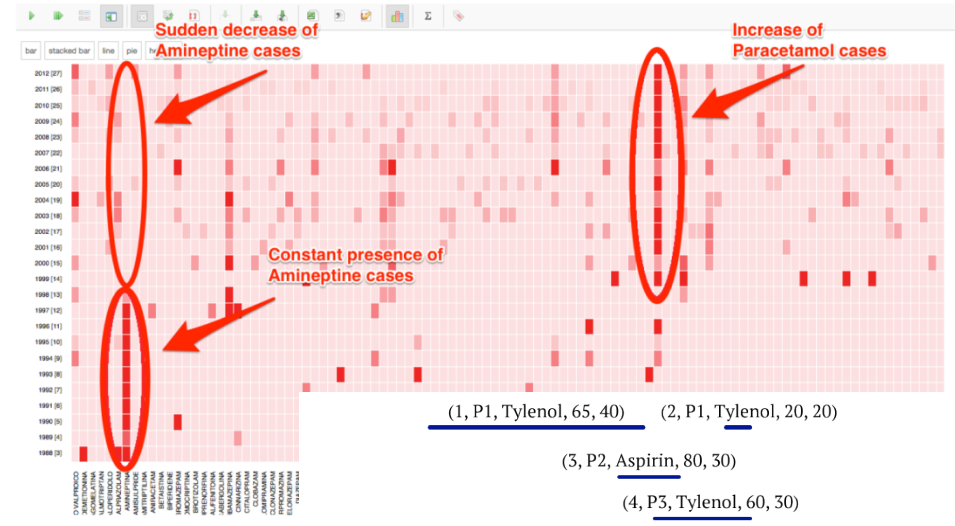
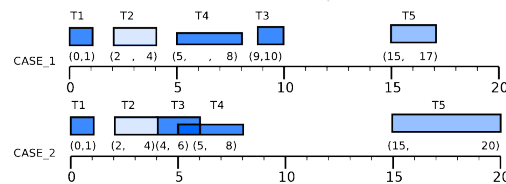
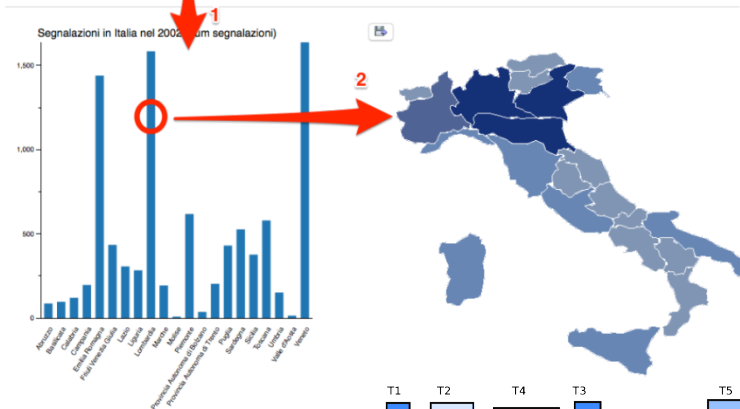
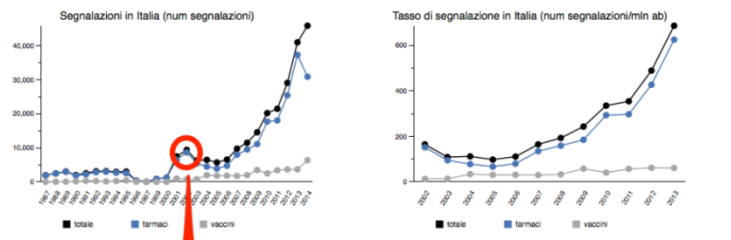






# Research on Clinical Topics

## » (Temporal) OLAP and data mining on biomedical/bioinformatics data warehouses

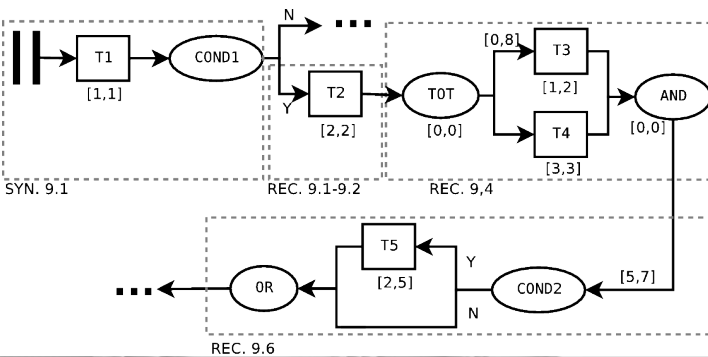
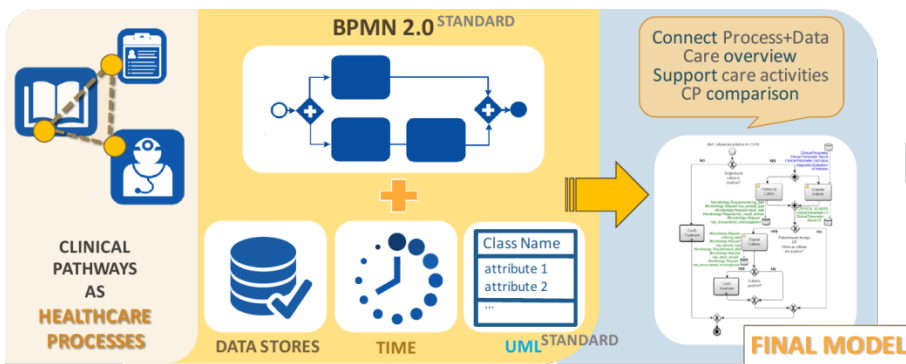




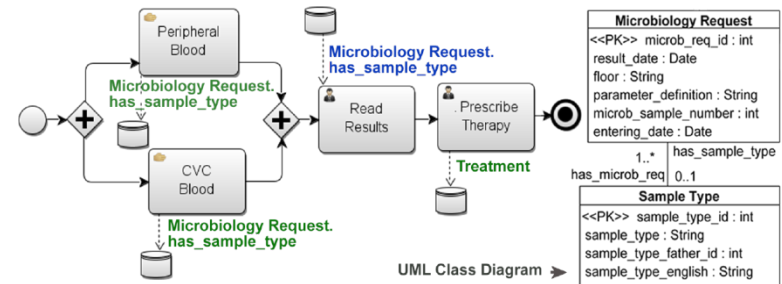
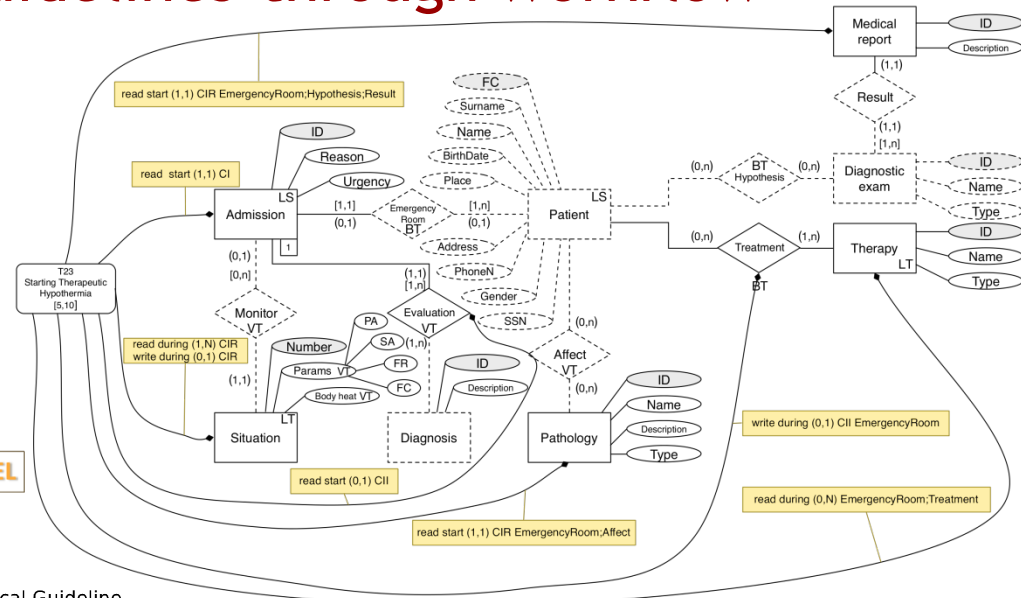


# Research on Clinical Topics

## Dealing with clinical guidelines through workflow management systems



Workflow	Clinical Guideline
T1	Hospital Admission
COND1	Suspect Stroke ? (Y/N)
T2	Neurological Assessment (do in parallel)
T3	Blood count+platelets
T4	Coagulation tests
COND2	Admitted to E.R.? (Y/N)
T5	Electrocardiogram







# Projects and Collaborations

## » ... with the Section of Pharmacology

- Data warehousing and OLAP analysis on RNF (Rete Nazionale di Farmacovigilanza) data
- BPMN-based representation of the adverse drug reaction reporting process
- Semi-automatic encoding of adverse drug reactions in free-text reports
- Analysis of drug consumptions data

## » ... with the Section of Psychiatry

- Analysis of patients contacts

## » ... with the Section of Pediatrics

- Analysis of lab exams







# Participation in Bioinformatics Conferences and Journals

- ❑ Conference on Artificial Intelligence in Medicine (AIME)
- ❑ IEEE International Conference on Healthcare Informatics (ICHI)
- ❑ International Symposium on Computer-Based Medical System (CBMS)
- ❑ International Conference on Health Information Science (HIS)
- ❑ Artificial Intelligence in Medicine
- ❑ International Journal of Computers in Healthcare

